

# National Oncology Data Alliance™ (NODA)

## Evaluate patterns of care through benchmarking

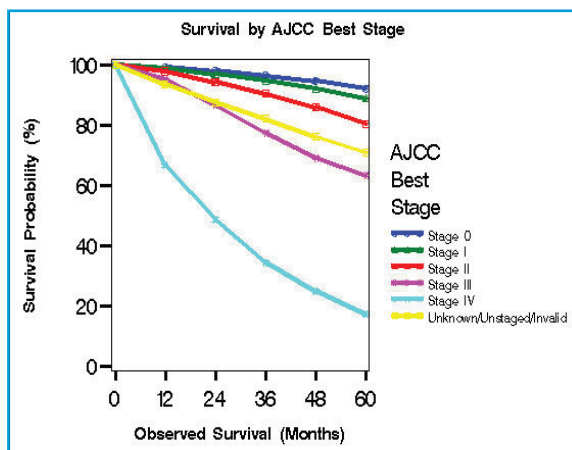
*Utilize your cancer registry data with the new NODA membership. The NODA is offered to customers utilizing METRIQ® for their cancer registry.*

### Empowering Clinical Decisions and Advancing Data Analysis

Impac Software would like to introduce you to the new National Oncology Data Alliance (NODA), formerly known as the National Oncology Database™ (NODB). Many of you have contributed cancer treatment data to the NODB and Cancer Information Reference File™ (CIRF), and we now invite you to become a part of the NODA – an even more unique benchmarking and analysis program. As members, you'll have access to over two million records from registries throughout the United States, including site-specific aggregate data reports for comparative reviews, annual reporting and access to web reports.

With more than two million cases occurring throughout the United States from 1985 to present, the NODA has a broad range of data including detailed tumor descriptions, treatments (radiation, hormonal, chemotherapy, biological and surgical), and survival outcomes in both outpatient and inpatient settings. Impac Software's NODA also is a pre-validated source of timely, longitudinal cancer data for population-based research.

5-year breast cancer survival graph generated from 2007 NODA data



### Benefits:

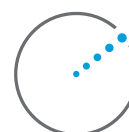
**How can participation in the NODA help your cancer registry program?**

- Web-accessible statistics and survival reports
- Optional state reporting services
- Custom statistical reports
- Contribute to ground breaking cancer research studies

### CONTACT:

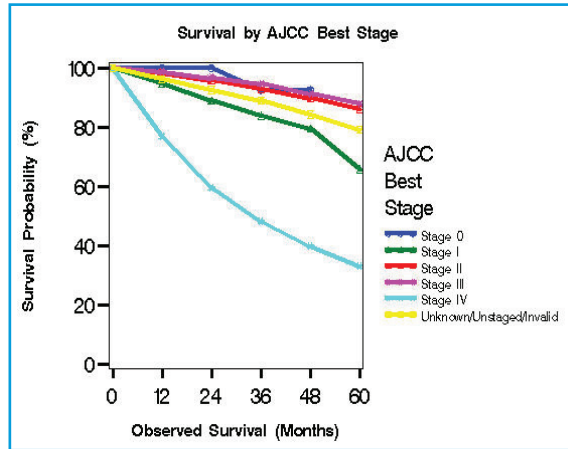
To join the NODA, please visit:  
[www.impact.com/noda](http://www.impact.com/noda)

(888)GO-IMPAC  
[sales@impact.com](mailto:sales@impact.com)



**ELEKTA**  
IMPAC SOFTWARE

5-year prostate cancer survival graph generated from 2007 NODA data



Top 10 sites chart generated from 2007 NODA data

Top Ten Sites (includes Analytic and Non-Analytic cases)		
Site	Count	Percent
Breast	15513	17.99
Prostate gland	11436	13.26
Non-small cell lung	10700	12.41
Colon	6013	6.97
Bladder	3472	4.03
Non-Hodgkin Lymphoma	3224	3.74
Melanoma	2767	3.21
Kidney	2457	2.85
Corpus Uteri	2160	2.50
Small Cell lung	1896	2.20
All other sites	26616	30.86
<b>Total: All sites</b>	<b>86254</b>	<b>100.00</b>

www.elekta.com

Human Care Makes the Future Possible

Corporate Head Office:

Elektä AB (publ)  
 Box 7593, SE-103 93 Stockholm, Sweden  
 Tel +46 8 587 254 00  
 Fax +46 8 587 255 00  
 info@elekta.com

Regional Sales, Marketing and Service:

North America  
 Atlanta, USA  
 Tel +1 770 300 9725  
 Fax +1 770 448 6338  
 info.america@elekta.com

Europe, Latin America,  
 Africa, Middle East & India  
 Tel +44 1293 544 422  
 Fax +44 1293 654 321  
 info.europe@elekta.com

Asia Pacific  
 Hong Kong, China  
 Tel +852 2891 2208  
 Fax +852 2575 7133  
 info.asia@elekta.com

